

Flashband Repair Kit

Flashband Repair

This is a semi-dry repair that ideally requires the kayak to be dry. Drying the area prior to application will greatly improve the initial 'tack' and subsequent adhesion of the product.

However, the repair could possibly be completed on-water, with one kayak pulled across another.

Caution

This repair can be easily damaged if scraped or caught; treat it with care, especially when launching, landing or rock-hopping.

Warning

Blowtorch: there is a slight delay between the operating trigger being released and the flame going out – make sure the flame is fully extinguished before putting the device down or handing it to someone. The blowtorch nozzle also remains hot for sometime after use – use it carefully and place it in a safe area to allow it to cool.

- 1 This repair can be completed on-water, with one boat pulled across another.



- 2 Dry the area (J-cloth or hat).

Clean away and/or flatten down any protruding material.



- 3 Remove the flashband from plastic packet.



- 4 Peel off the thin plastic backing.

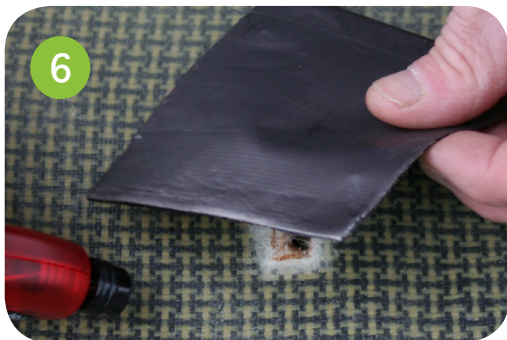


- 5 Use the blowtorch to dry and warm the damaged area.

At the same time, use the blowtorch to warm and soften the black bitumen of the flash band (not the silver/plastic covering).



- 6 Place the patch on the damaged area.



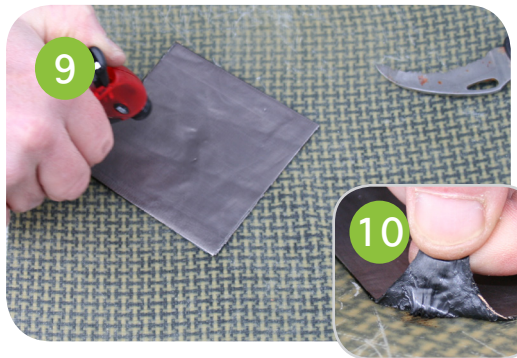
- 7 Starting from the centre of the patch, use your hands/thumbs to gently press the patch into place. This will force any air bubbles out to the edges.



- 8 Run a hard, rounded edge (edge of blowtorch, knife sheath), across the patch to apply pressure and press it in place.



- 9 Use the blowtorch to gently warm the patch; keep the flame constantly moving so it doesn't burn the outside of the patch (the silver/plastic covering material should not discolour).



- 10 As the patch warms the bitumen will melt and seal the patch in place.

- 11 Once the bitumen is soft, again, gently run a hard, rounded edge (edge of blowtorch, knife sheath), across the patch to apply pressure and seal it in place.

